

HMA Greenbank split couplings have been designed to suit the range of steel pipe diameters from DN100 to DN650 nominal pipe sizes.

The advantages of the HMA Greenbank split coupling include:

- Built-in handles permit safer handling and reduce the potential for personal injury
- Availability of most sizes ex-stock from HMA locations around Australia

- Custom-made couplings service

The HMA Ceramatch split coupling has been engineered to suit the requirements of industry.

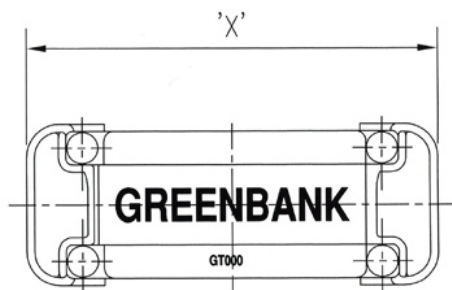
All castings are constructed of Spheroidal Graphite (S.G.) Iron to AS1831, GR500-320-7.

Your regional HMA office is able to provide advice on the complete range of HMA Greenbank Piping System products and services.

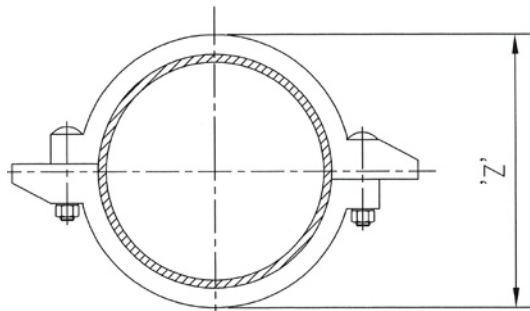


# Greenbank - Split Couplings

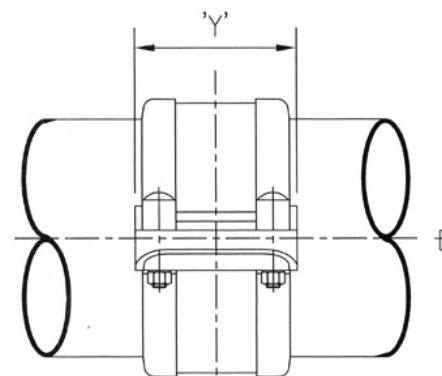
Coupling Type	DIM SiTech			Pipe O.D.	Coupling Weight kg
	X	Y	Z		
GT100	270	205	170	114.3	12
GT150	324	205	224	168.3	17
GT200	456	205	275	219.1	22
GT250	533	205	337	273.1	28
GT300	584	205	388	323.9	35
GT350	618	220	416	355.6	48
GT400	682	220	480	406.4	52
GT450	733	220	531	457	55
GT500	784	220	582	508	60
GT550	834	220	632	559	65
GT600	886	220	684	610	75
GT650	936	220	734	660	80



TOP VIEW



FRONT VIEW



SIDE VIEW

## NOTES:

1. 2 OFF CASTINGS REQUIRED PER COMPLETE COUPLING.
2. CASTING: S.G. (SPHEROIDAL GRAPHITE) IRON TO AS1831, GR500-320-7.
3. FINISH: G13 EMERALD GREEN BITUMINOUS PAINT.
4. PRESSURE RATING: 800 KPA  
HIGHER PRESSURE RATING IS AVAILABLE ON REQUEST.

## Applications:

Some examples of where Greenbank split couplings are widely used:

- Coal Prep Plant pump suction and discharge lines
- Minerals processing plant pump suction and discharge lines
- Cement plants
- Where ever plain ended pipes need to be joined
- Where ever pipe work needs to be easily removed to allow removal and work on adjoining pumps, valves etc.