

HMA Ceramatch Pipescan reduces maintenance costs and increases production through accurate pipe wear monitoring.

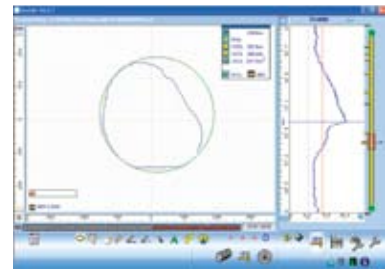
The unique Pipescan service will detect and measure subtle changes to the internal pipe diameter due to wear.

Using an internal diameter measuring probe and a video camera Pipescan can quickly and accurately measure and quantify pipe wear.

All information is entered into a database following each Pipescan survey. A customer report is then generated highlighting pipe condition, wear rates, predicted pipe life, maintenance recommendations and budget cost projections.

The database is regularly updated with each service to ensure the maximum life of the pipeline is achieved while at the same time optimising plant availability.

Using an internal diameter measuring probe and a video camera we can quickly and accurately measure and quantify pipe wear.



Benefits:

- Eliminates unscheduled shutdowns caused by pipe failure.
- Reduces maintenance costs;
 - No breakdown repairs
 - Maximises pipe life
- Increases pipe availability as pipeline integrity is assured between regular shutdowns
- Allows forward planning for maintenance
- Reduces stock
 - Predict what pipes will be needed
 - Predict when they will be needed
 - No need for 'emergency' stock
- Accurate annual budget expenditure forecasts
- Coincides pipe maintenance with scheduled plant shutdowns
- Releases maintenance crews for more critical work

Pipescan

Detailed Report with Maintenance Advice

GREENBANK PIPESCAN REPORT

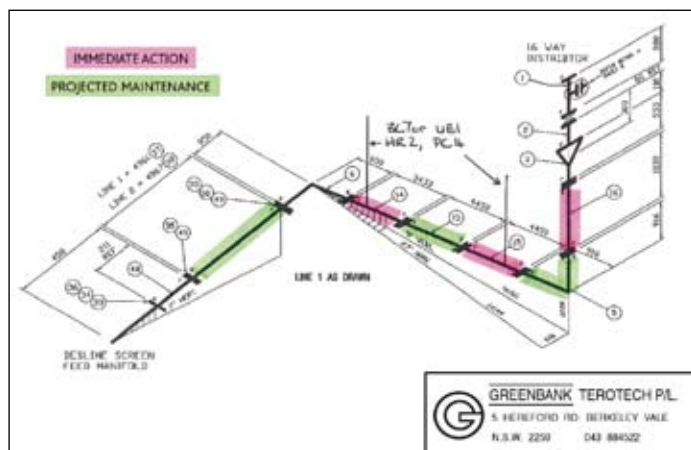
Deslime Screen Feed Lines PROJECTED MAINTENANCE REPORT

Period: 1/1/2009 To: 1/1/2010

Survey Number: 19
Survey Date: 14/2/09

Drawing Ref	Item No.	Line No.	Part No.	Part Description	Problems	Recommendations	Action Req'd by	Initials	Date
PP1151	15b	1	PP1151-15	Straight	Mod Wear	Rotate 120	10/07/2009		
PP1151	37	1	PP1151-37	Straight	Mod Wear	Rotate 120	23/06/2009		
PP1151	5	1	PP1151-5	Bend	Mod Scolloping	End for end	26/06/2009		
PP1151	14	2	PP1151-14	Straight	Mod Wear	Rotate 120	14/06/2009		
PP1151	38	2	PP1151-38	Straight	Mod Wear	Rotate 120	10/07/2009		
PP1151	15	3	PP1151-15	Straight c/w Alumina	Mod Wear	Rotate 120	4/06/2009		
PP1151	20	3	PP1151-20	Straight	Mod Wear	Rotate 120	4/04/2009		
PP1151	39	4	PP1151-39	Straight	Mod Wear	Rotate 120	23/06/2009		
PP1151	22	5	PP1151-22	Straight	Mod Wear	Rotate 120	23/06/2009		
PP1151	40	5	PP1151-40	Straight	Heavy Wear	End for End	29/03/2009		
PP1151	41	6	PP1151-41	Straight	Mod Wear	Rotate 120	9/04/2009		
PP1151	8	7	PP1151-42	Straight	Mod Wear	Rotate 120	14/06/2009		
PP1151	8	8	PP1151-43	Straight	Mod Wear	Rotate 120	13/04/2009		
PP1151	23	9	PP1151-23	Straight	Mod Wear	Rotate 120	11/07/2009		
PP1151	X	9	PP1151-44	Bend	Mod Scolloping	End for End	23/06/2009		
PP1151	23	10	PP1151-23	Straight	Mod Wear	Rotate 120	7/04/2009		
PP1151	8	10	PP1151-44	Bend	Mod Scolloping	End for End	14/06/2009		
PP1151	18	11	PP1151-18	Straight	Mod Wear	Rotate 120	5/04/2009		
PP1151	45	11	PP1151-45	Straight	Mod Wear	Rotate 120	14/06/2009		
PP1151	15	11	PP1151-15	Straight c/w Alumina	Mod Wear	Rotate 120	5/04/2009		
PP1151	15	12	PP1151-15	Straight	Mod Wear	Rotate 120	1/05/2009		
PP1151		12	PP1151-45	Straight	Mod Wear	Rotate 120	16/06/2009		
PP1151	15b	13	PP1151-15	Straight	Mod Wear	Rotate 120	7/04/2009		
PP1151	46	13	PP1151-46	Straight	Mod Wear	Rotate 120	14/06/2009		

Easily Interpreted Information



Self Sufficient & Qualified People

Complete maintenance service can be provided utilising our Site Maintenance Division.